



group



More than just Matting

Sandton Office

+27 11 025 0301
 +27 86 626 0790
 sales@maabele.co.za
 www.maabele.co.za



Contents

Workplace Matting	A comprehensive range of anti-fatigue and non-slip safety matting.	p.5 to p.13
Floor Tapes	Non-slip floor and line marking tapes for warehouse floors.	p.14 to p.15
Flooring	GRP is the ultimate non-slip surface for public stairs and walkways.	p.16 to p.18
Entrance Matting Systems	A range of durable matting systems for busy entrance areas, such as retail, schools, hospitals, terminals.	p.19 to p.21
Entrance Mats	From safety matting for playgrounds to gym flooring free-weight area matting.	p.22 to p.25
Mats for Catering	Floor and bar mats for the catering industry.	p.26 to p.29
Mats for Leisure	Anti-slip matting for the leisure industry.	p.30 to p.32
Safety Knives	Safety knives designed for professional use in industry.	p.33

Welcome

A warm welcome to Maabele Group Plastics 2014-2015 collection of matting and flooring products! We are delighted to present our latest product range to our customers in South Africa, UK, mainland Europe and beyond.

While 'floor matting' remains at the core of our business, Maabele Group Plastics today is much 'more than just matting'. Our GRP products, PVC floor tiles and barrier tapes, as well as our Moving Edge range of safety knives underline our diversity.

Maabele Group Plastics has actively pursued innovation, introducing new products that revitalize, or in some cases, revolutionize the marketplace. Our entrance matting systems are one such example.

As one of the most established matting manufacturers and suppliers with facilities in the United Kingdom, Germany, Slovakia, Poland and South Africa, Maabele Group is here to give you the product choice, advice and the sales support you require for your specific location.

For the very latest news, case studies and product information, please visit our websites.

Greener Thinking



Quality



Maabele Group offers the highest levels of quality and customer care, supported by credentials that include ISO/TS:16949 accreditation. Consistent quality of service and consistent quality of product, supported by knowledgeable fully trained personnel, are pivotal to the success of our business. We strive at all times to deliver exceptional levels of customer satisfaction.

BBBEE

Maabele Group is proud to announce that we are a Level 3 BBBEE contributor.



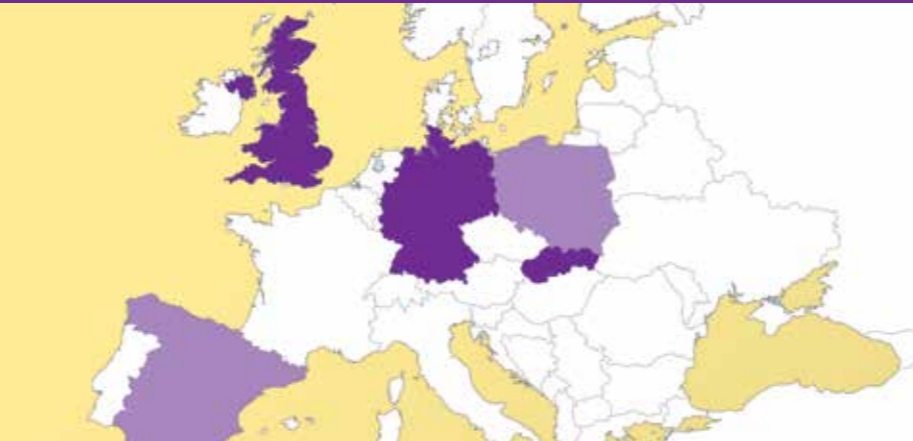
Free Site Visit



'Right product, first time!'

Our experienced sales team is more than happy to conduct free site visits to ensure the right product is specified for your specific location. We regularly accompany our distributors' sales representatives, or go on site with flooring contractors. Whether you are an end user, a contractor or a distributor, just get in touch if you would like us to visit your site and make a recommendation. In certain situations, we also supply trial mats. It is about taking costly guess work out of projects for a hassle-free experience.

Localised Supply



We are well positioned to efficiently supply and support customers throughout the UK, mainland Europe and South Africa. Maabele Group has comprehensively stocked warehouses and distribution centres in the UK, Germany, Slovakia, Poland and South Africa supported by dedicated sales teams in these respective countries.

Online Support



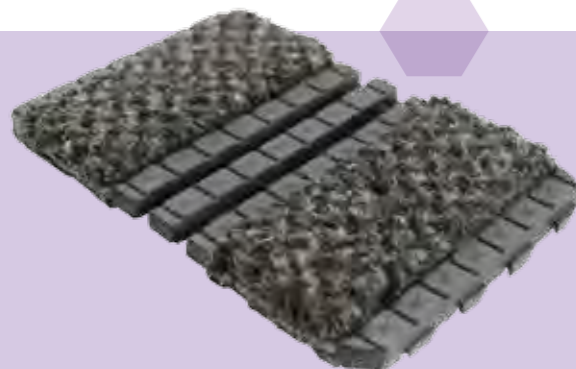
Our websites are a helpful resource for accessing useful information such as a technical data sheets and drawings for specific products, case studies, installation, cleaning and maintenance guidelines, industry related research and articles, as well as our latest company news. We also have some handy online tools to help the buying process, such as our Premier Tile calculator.

Delivery



Maabele Group offers flexible and reasonably priced delivery options. We have the capability to satisfy a demand for next-day delivery, while offering 2-3 day turnaround as standard. We work with a number of recognised and reliable courier firms in order to meet our customer's high expectations. For a personalised delivery quotation please speak with one of our advisors on 021 557 1204.

FREE SAMPLE SERVICE



Our Free Sample Service is an invaluable asset for many installations, enabling you to make an informed decision about a product before purchasing. It gives reassurance about the quality of our products and ensures it meets your specification. Please feel free to enquire about product samples by calling 021 557 1204.



Workplace Matting

Whether it is to reduce the risk of slipping on potentially treacherous surfaces, or to provide fatigue relief for standing operatives, Maabele Group Plastics has the ideal matting solution for greater safety and comfort in your workplace. We offer an unrivalled choice to suit a wide spectrum of budgets and needs.

FATIGUE

Muscular Skeletal Disorders

Musculoskeletal disorders (MSDs) are problems affecting the muscles, tendons, ligaments, nerves or other soft tissues and joints. Certain occupational activities, such as regular prolonged standing on hard floor surfaces, can be a trigger for such problems. Static positions and awkward postures are significant contributors. Statistics for MSDs are usually summarized in three categories: Upper Limb Disorders, Lower Limb Disorders and Back Pain.

The danger is they can creep on gradually; initially these can show just mild symptoms but in time, can progressively get worse leading to severe pain and sometimes irreversible acute conditions that can impact an individual's quality of life. A well designed, well-equipped and well managed workplace can avert such problems.

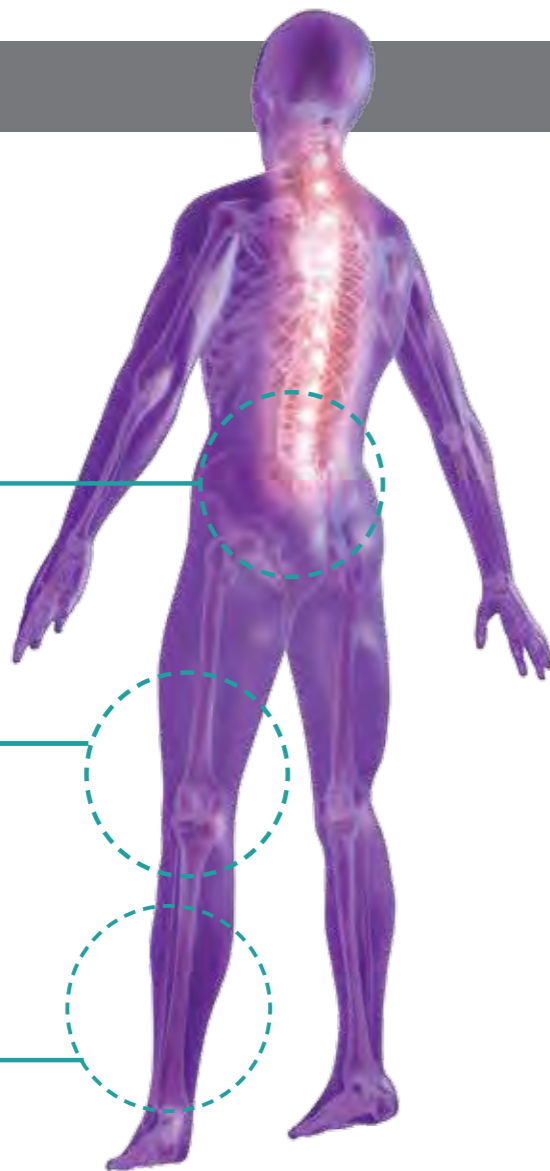
Symptoms

1 Tiredness
Tiredness and lapses of concentration can lead to other accidents in the workplace.

2 Discomfort
Standing can also lead to lower back and upper limb pain and discomfort.

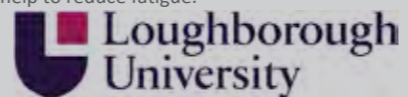
3 Problems
Regular standing on hard floor surfaces can damage joints, cause leg swelling as well as lead to problems in the feet, including bunions, corns, Achilles tendonitis, plantar fasciitis and other orthopaedic conditions.

4 Symptom
Varicose Veins is a common symptom for those whose occupations require lengthy periods of standing.



Scientific Study Confirms the Benefits of Anti-Fatigue Matting

A scientific study commissioned by Maabele Group Europe Ltd and conducted by Loughborough University emphatically confirmed that anti-fatigue mats can significantly increase comfort to workers who stand for prolonged periods of time and also help to reduce fatigue.



The study carried out by the Department of Human Sciences using 14 independent participants compared a number of anti-fatigue floor matting samples to standing directly on concrete, testing in laboratory conditions using both objective and subjective measures.

Test methods included infrared thermal imaging, body temperature sensors, calf circumference measurements and cognitive testing. Participants were provided with the same test clothing and conditions, standing on different anti-fatigue mats.

The subjective results showed statistically significant benefits to users of anti-fatigue mats when compared to standing on a concrete floor. Both thermal and postural comfort benefits were experienced and levels of fatigue were reduced.

Statistics

- An estimated **439,000** workers in 2011/12 suffered from MSDs caused or made worse by their current or past work. Approximately **176,000** of these workers suffered from a bad back; **177,000** from problems relating to upper limbs and neck, and in the region of **86,000** with lower limb problems.
- It is estimated that **7.5 million working days** were lost in 2011/12 through work-related MSDs.
- On average, each person suffering took an estimated 17 days off in 2011/12.

(Source: Health and Safety Executive – relating to statistics in Great Britain)

How can Anti-Fatigue Matting help?

The cushioning helps to promote regular foot movement as the feet naturally adapt to the surface of the mat. The movement of muscles contracting and expanding is very subtle but is enough to help circulation and reduce (even prevent in some cases) the health risks associated with prolonged standing.

Many veins, especially veins in the legs have one-way valves to help blood flow back to the heart against the

force of gravity. The blood pushes through the valves as it travels towards the heart and the valve then closes to prevent backward flow. Walking and movement, such as that done naturally on an anti-fatigue mat, compresses the veins and helps thrust the blood towards the heart.

Anti-fatigue matting also helps to distribute the pressure over a larger surface area, therefore absorbing some of the impact from standing.

Look out for this icon



Icon Key

Use the new icon rating system to more quickly review each product's particular strengths.



Anti-Fatigue



Slip Resistant



Wear Resistance



Flame Retardant

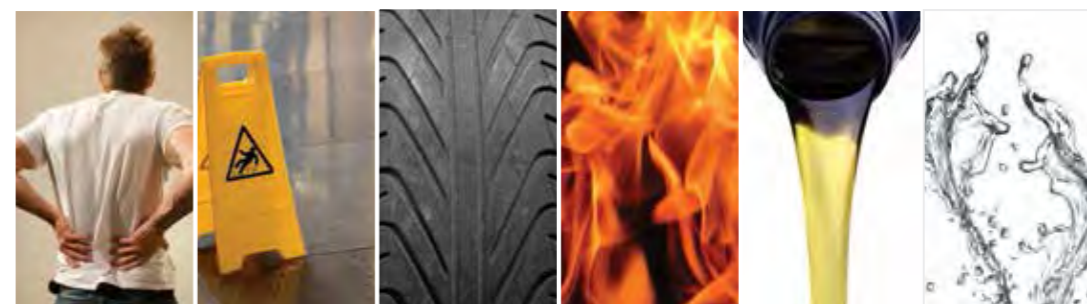


Water Resistant



Oil Resistant

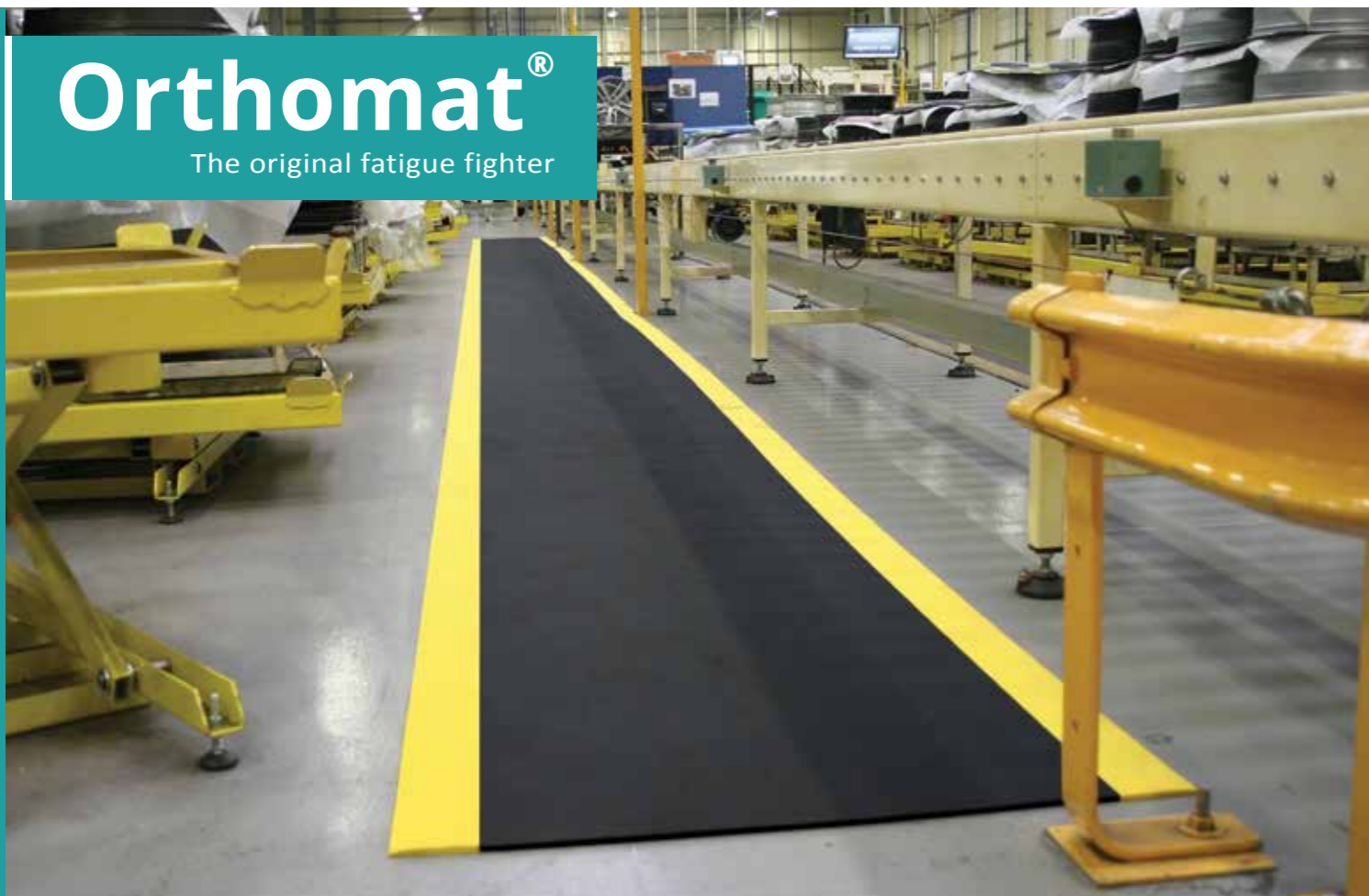
PRODUCT SELECTOR



Product Name	Anti-Fatigue					Slip Resistant					Wear Resistance					Flame Retardant	Oil Resistant	Water Resistant	P.
	1	2	3	4	5	1	2	3	4	5	1	2	3	4	5				
Orthomat® Anti-Fatigue			•					•					•			•			8
Solid Fatigue-Step				•					•					•		•	•		9
Fatigue-Step				•					•					•		•	•		9
Maabele Group Deluxe			•						•					•		•			10
Rampmat		•							•					•					10
Unimat		•							•					•				•	10
K-Mat		•							•					•			•		11
Diamond Grid		•							•					•			•		11
Bubblemat			•						•					•					11
COBAmat®		•							•					•		•	•		12
Flexi-Deck		•							•					•		•	•		12
COBASwitch VDE	•								•					•					13
Grip Safe									•					•					13
COBArib	•								•					•					14

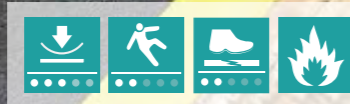
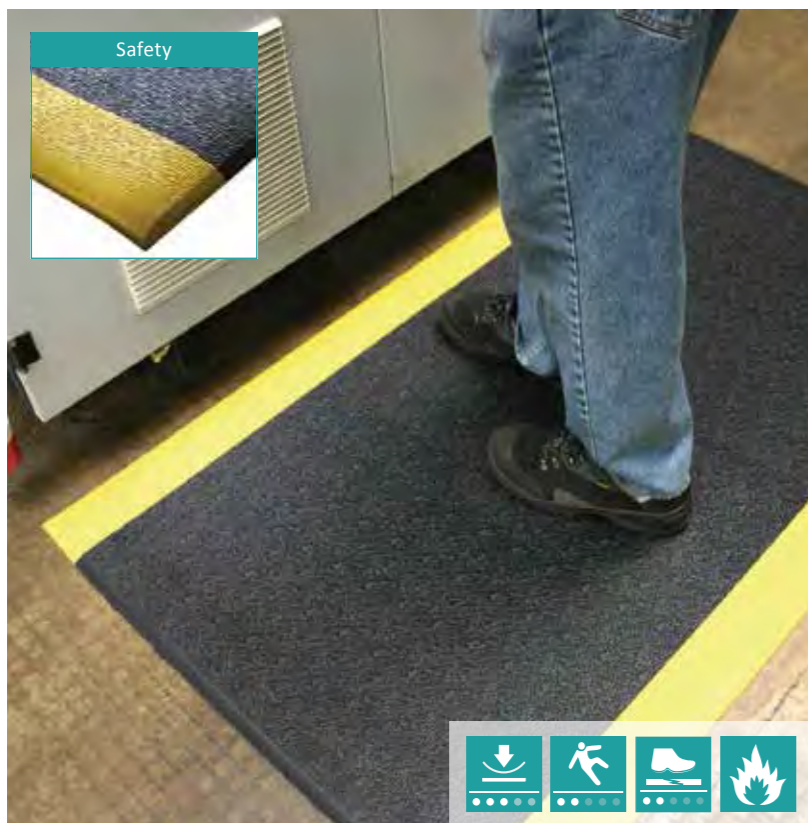
Orthomat®

The original fatigue fighter



Orthomat® Safety has been specifically designed to reduce the onset of fatigue caused by prolonged standing, while providing some underfoot grip in dry environments. The durable, yet extremely comfortable, matting manufactured from 100% closed cell PVC foam, is one of our best-sellers for many industrial locations, especially assembly and packing stations. It effectively

provides the right balance of underfoot cushioning to stimulate blood circulation and in doing so reduces pressure to the feet, legs and back. Orthomat® comprises pebbled surface with the option of bright yellow safety bevelled edge borders for increased awareness.



Orthomat® Safety

- Pebbled 'textured' surface.
- Orthomat® Safety has bright yellow bevelled edge borders.
- Conforms to Slip Resistance Test EN13552 (Category R10).
- Fire tested to DIN54332 (B2) part of DIN4102.

Product height: 9mm

Sizes
0.6m x 0.9m
0.9m x 1.5m
0.9m x 18.3m

Solid Fatigue-Step

Ultra-comfortable interlocking tiles in nitrile and rubber

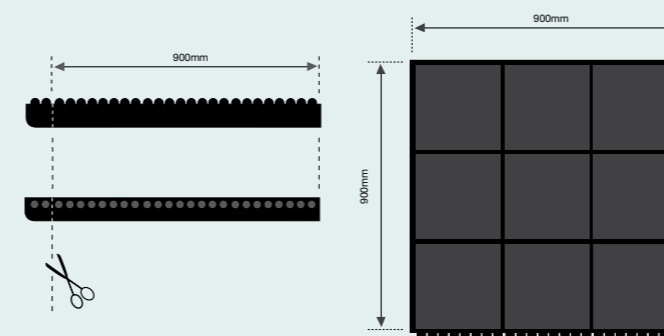
- Interlocking solid surface tiles made from a blend of natural rubber and nitrile.
- Tiles link together to provide a very comfortable anti-fatigue flooring.
- Can withstand temperatures of up to 160°C and spillage of molten glass.
- Individual tiles can be moved and replaced with ease.
- Conforms to Slip Resistance Test EN13552 Category R10.
- Optional bevelled edging in yellow or black.

Product height: 16mm

Sizes
Tile 0.9m x 0.9m
Bevelled corner edge 75mm x 1m



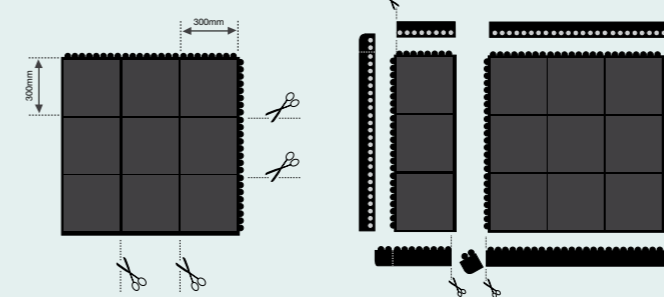
Easy to install



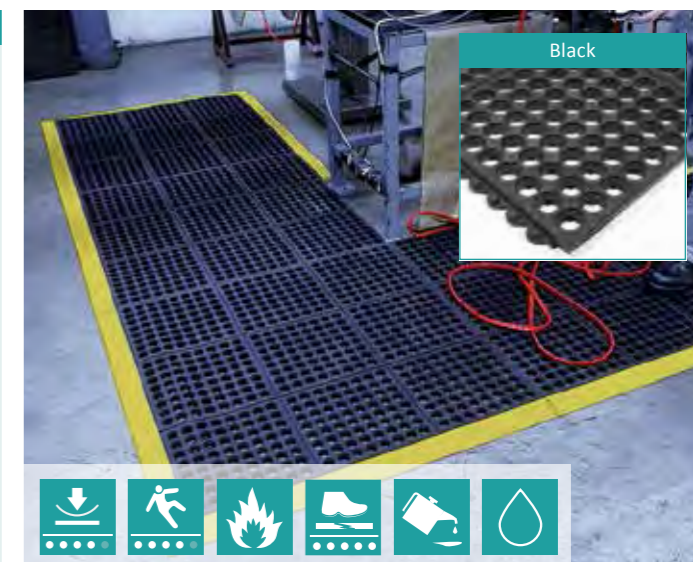
Edging comes in both Male and Female versions. Both versions have an attached corner piece that can be trimmed to allow for continuous edging.

Uniquely Flexible

Every tile can be cut along the dividing (30mm) lines and still retain its ability to be linked to another tile or edge.



Example:
2 x Tile (1 x Cut)
3 x Female Edge
3 x Male Edge
Area covered = 1.08m²



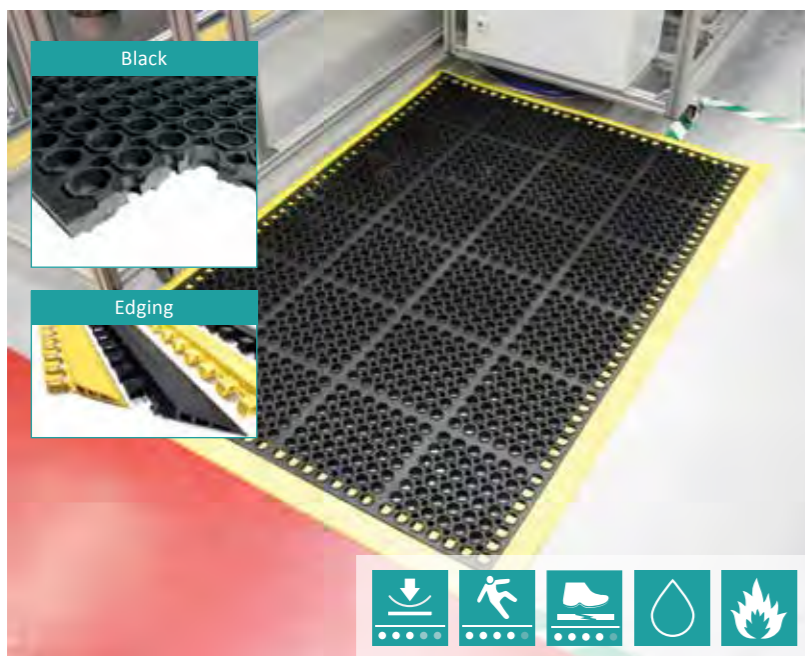
Fatigue-Step

Anti-slip floor tiles for wet and oily areas

- Interlocking open holed tiles.
- Soft, yet resilient rubber floor tiles.
- Open holes allow efficient drainage of spill liquids.
- Effective anti-fatigue properties for prolonged standing.
- Fatigue-Step conforms to Slip Resistance Test EN13552 Category R10.

Product height: 19mm or 14mm

Sizes
Tile 0.9m x 0.9m
Bevelled corner edge 75mm x 1m (19mm only)



Maabele Group

Deluxe Ultra

comfortable, ultra safe

- Excellent slip resistance in wet or oily areas.
- Circular open holes rapidly 'drain away' liquid spillage.
- Creates a safe and very comfortable standing surface.
- Resilient, manufactured from hard wearing natural rubber.
- Suitable for heavy duty industrial use.
- Single mat with edging or link together with connectors.

Product height: 19mm

Sizes
Mat 1m x 1.5m
Long edge 1565mm x 50mm
Short edge 1074mm x 50mm



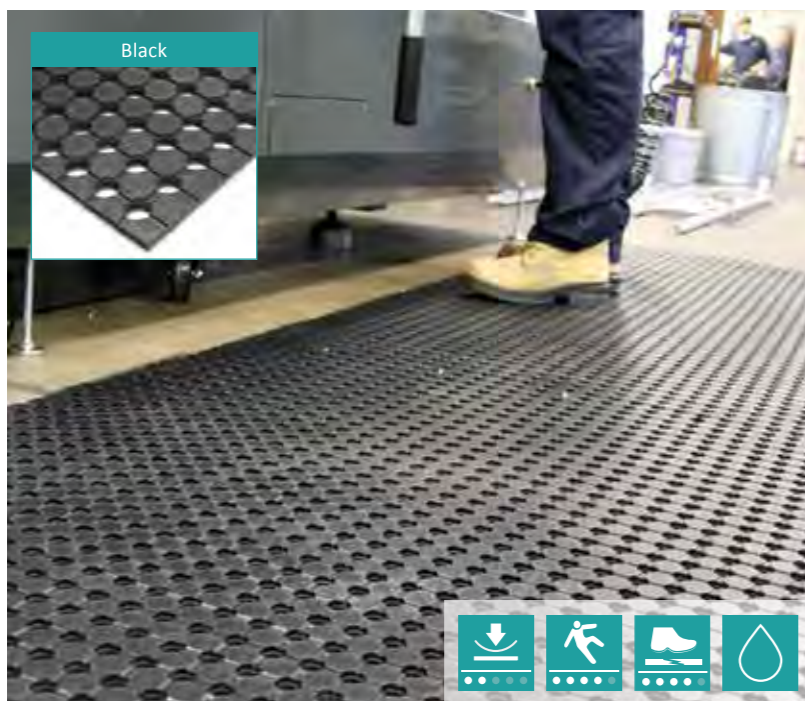
Rampmat

An economical anti-fatigue mat

- A economical anti-fatigue mat for the workplace.
- Raised circular surface for superior slip resistance.
- Conforms to Slip Resistance Test EN13552 Category R10.
- Open drainage holes for spilt liquids.
- Made from hardwearing NBR rubber.
- Moulded bevelled edges reduce trip hazards.

Product height: 10mm

Size
0.9m x 1.5m



Unimat

The only 'drainable' rubber runner

- Versatile open holed rubber runner.
- Excellent drainage properties.
- A real asset in helping to prevent slipping in wet /oily areas.
- Easy to roll up and move to new locations.
- Easily cleaned for extended wear and tear.

Product height: 10mm

Size
0.9m x 10m



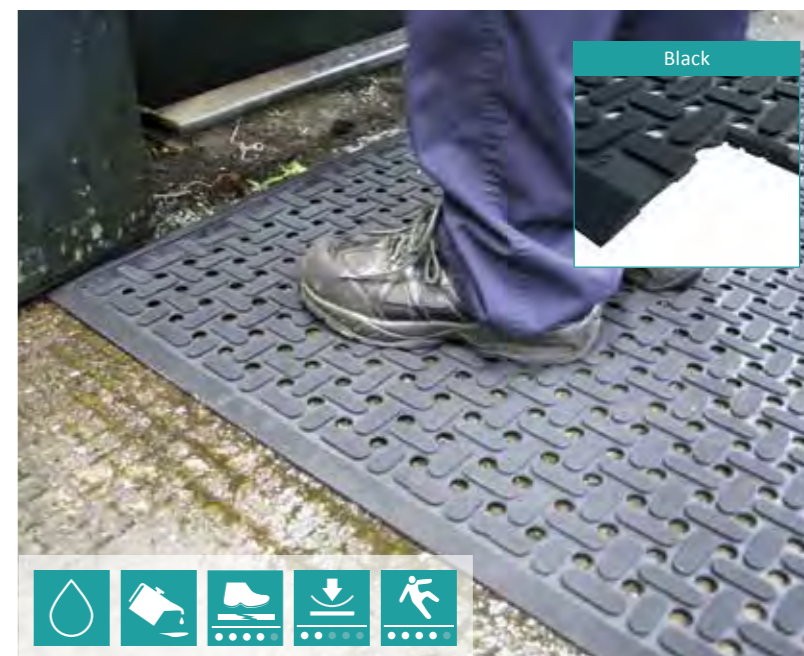
K-Mat

Get a grip on greasy floors

- 100% nitrile mat.
- Excellent resistance to grease, oils, fats and detergents.
- Machine washable.
- Ideal for food processing/manufacturing areas.
- 'Cross-grip' surface for exceptional slip-resistance.
- Open holes for efficient drainage.
- Effective anti-fatigue properties.

Product height: 9mm

Sizes
0.85m x 1.4m
0.85m x 2.9m



Diamond Grid

Flexible PVC multi-purpose matting

- Open diamond grid pattern for nonslip
- Anti-slip top surface for a safe footing
- Comfortable for bare feet.
- Specially designed underside studs have exceptional water drainage properties
- Easily cleaned, rolled up and moved.

Product height: 8.5mm
Product weight: 2.8Kg/m²

Size
1m x 9m



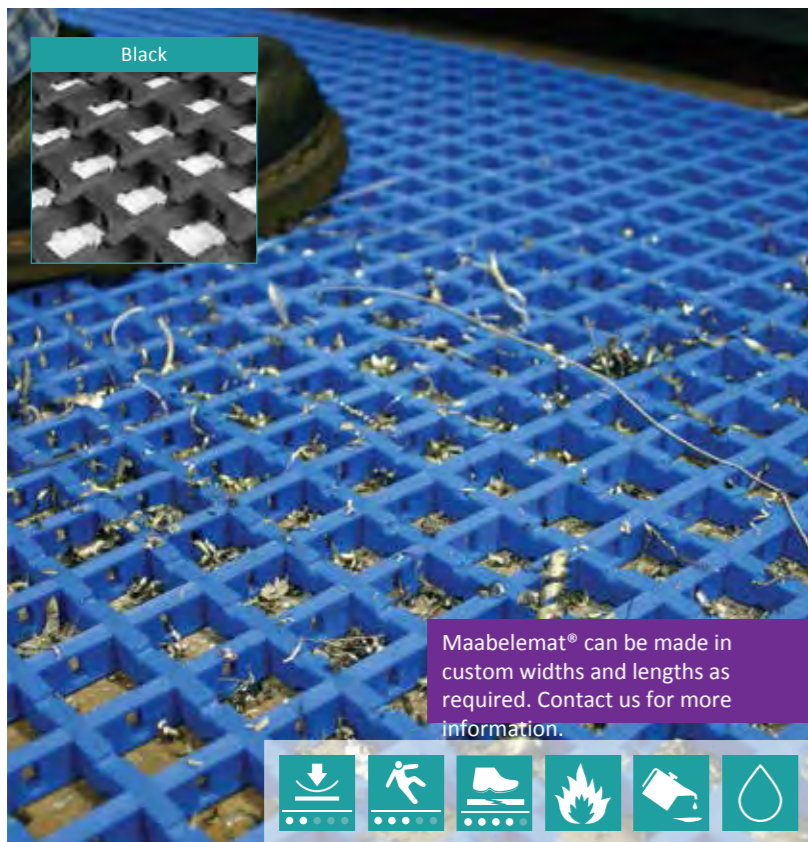
Bubblemat

- Effective anti-fatigue mat made from 100% natural rubber.
- Both options feature a raised bubbled surface to stimulate blood circulation.

Product height: 14mm

Sizes
0.6m x 0.9m
0.9m x 1.2m





Maabelemat® can be made in custom widths and lengths as required. Contact us for more information.



mat® Standard An

excellent all-rounder

- Interwoven PVC matting with open holes designed to effectively trap swarf and industrial debris.
- Excellent resistance to wear and tear.
- Flexible PVC extrusions resist breaking under pressure.
- Comfortable to stand on, provides insulation from a cold concrete floor and reduces fatigue.
- Reduces leg and back ache caused by prolonged standing.
- Cross-ribbed in both directions for a safer footing in wet or oily conditions.
- Resistant to mild acids and alkalis.
- Fully reversible - easy to clean.
- Fire tested to DIN 54332 (B2) part of DIN 4102. Conforms to Slip Resistance Test DIN 51097 Category B. 22mm x 22mm hole size.
- Colour options: black and blue.

Product height: 12mm

Sizes
0.6m x 10m
0.9m x 10m
0.6m x per linear metre
0.9m x per linear metre



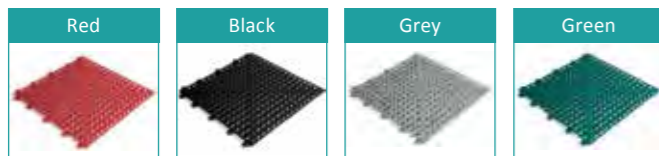
Flexi-Deck

Flexible PVC floor tiles ideal for wet areas

- Flexible PVC interlinking tiles for industrial use.
- Holes allow drainage of liquid and debris.
- Specially designed underside studs have exceptional water drainage properties.
- Anti-slip top surface for a safe footing in wet conditions.
- Easily cleaned, rolled up and moved.
- Resistant to most oils and chemicals.

Product height: 13mm

Sizes
Tile 30cm x30cm (pack of 9)
Female Edge (pack of 3)
Male Edge (pack of 3)
Corner (pack of 4)



Knee-Saver

Take the strain out of kneeling

- The ideal pad for all those uncomfortable kneeling jobs.
- Reduces knee pain and lower back stress caused by regular kneeling.
- Lightweight to carry – only 0.45kg per pad – with carrier handle.
- Resistant to oils and chemicals.
- Manufactured from closed cell PVC/nitrile blend foam.

Product height: 25mm

Size
530mm x 360mm

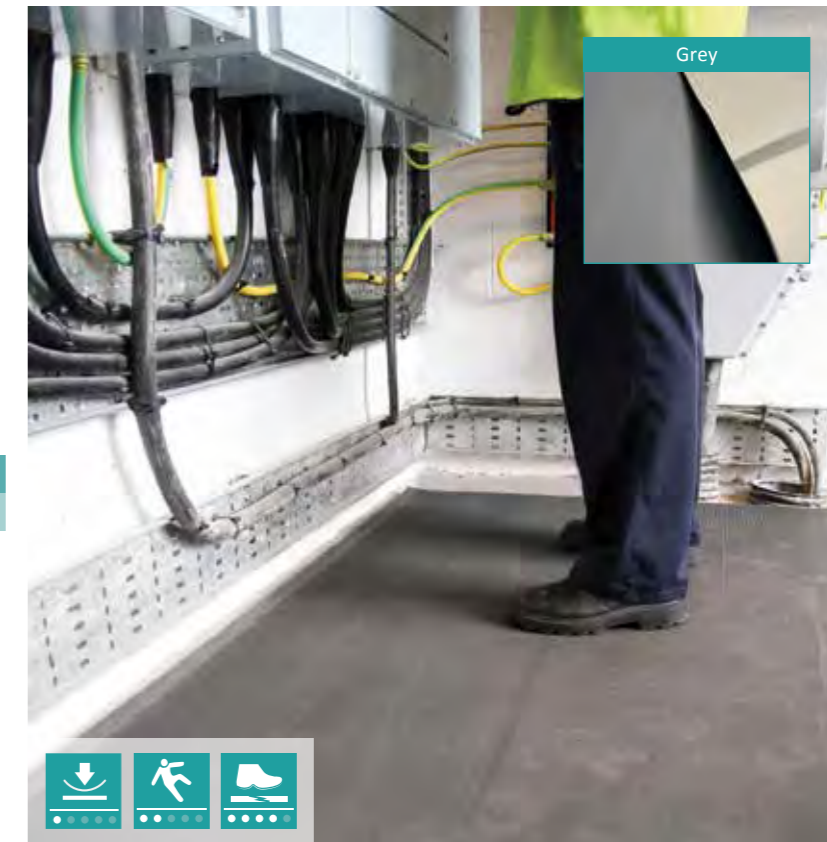
switch

VDE Electrical switchboard Matting

- Lightweight mat designed for use in front of open switchboards and high voltage equipment. Provides safety for operatives against electric shock.
- Fine fluted surface has slip-resistance benefits.
- 4.5mm x 9m rolls - VDE approved
- Tested to 50,000 volts according to DIN EN60243-1 (VDE0303 part 21) IEC 60243-2:1996

Product height: 4.5mm

Size
1m x per linear metre



Grip Safe

Anti-slip, protective liner

- Ideal non-slip liner for benches and drawers.
- Cushions and protects components.
- Easy to cut and trim to shape.
- Manufactured from PVC foam.
- Machine washable.

Product height: 4mm

Sizes
0.6m x 1.2m
0.6m x 10m



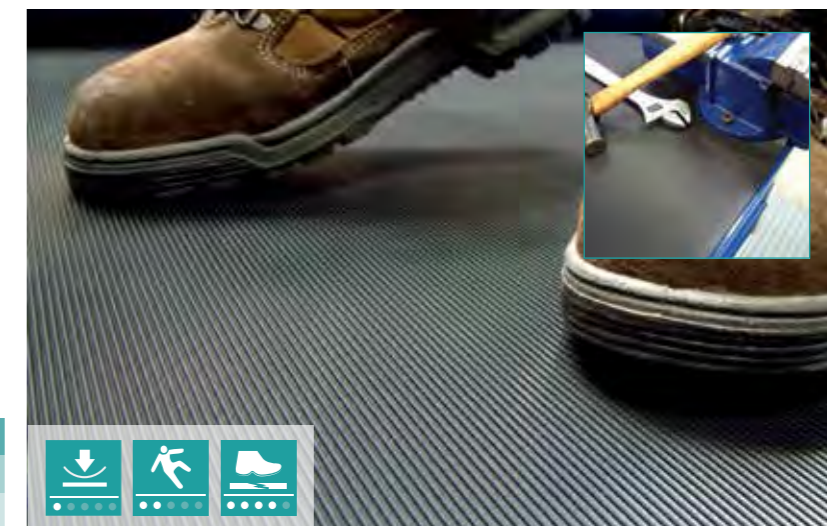
Rib

Anti-slip fluted rubber matting

- Durable, manufactured from hardwearing natural rubber.
- Fine ribbed surface has effective slip-resistance.
- Provides insulation from cold concrete floors.
- Has some noise insulation properties.
- Can also be used on workbenches.

Product height: 3mm

Sizes
0.9m x 10m
0.9m x per linear metre (max.10m)





Floor Tapes

Our high quality floor tapes are widely used by many authorities, service providers and industries for the demarcation of specific areas, such as potentially hazardous zones. Our established Gripfoot product provides underfoot traction to avert slip-related accidents.

Gripfoot

Grit Tape, Cleats and Tiles for Slip-Resistance

- Abrasive grit 'anti-slip' products with self-adhesive backing available in tapes, cleats and tiles.
- Provides additional grip underfoot on smooth surfaces.
- Hard wearing and easy to install.
- Gripfoot Tape – versatile for floor surfaces, machinery, vehicles and marine use.
- Gripfoot Cleats (rectangular) are designed for use on steps and stairs.
- Gripfoot Tiles (square) are ideal for increasing safety on smooth, tiled floors.
- Conforms to Slip Resistant Test EN 13552 Category R13.

Roll Sizes (Gripfoot / Gripfoot Conformable)

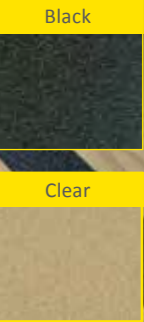
- 25mm x 18.3m
- 50mm x 18.3m
- 102mm x 18.3m
- 152mm x 18.3m

Cleats: (Gripfoot / Gripfoot Conformable)

- 152mm x 610mm (pack of 10) - Black only

Tiles: (Gripfoot / Gripfoot Conformable)

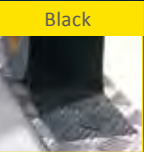
- 140mm x 140mm (pack of 10) - Black only



Gripfoot Conformable

Foiled backing fits to irregular surfaces

- Abrasive grit 'anti-slip' surface tape, cleat or tiles.
- Self-adhesive foiled backing allows for 'rolling' or 'hammering' to shape.
- Ideal for diamond treadplates, curved or irregular surfaces.



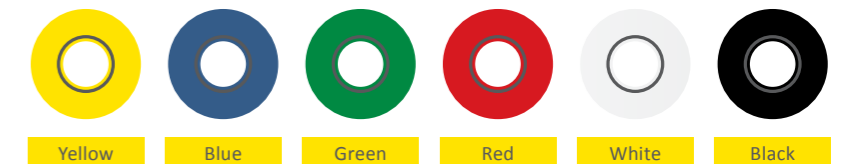
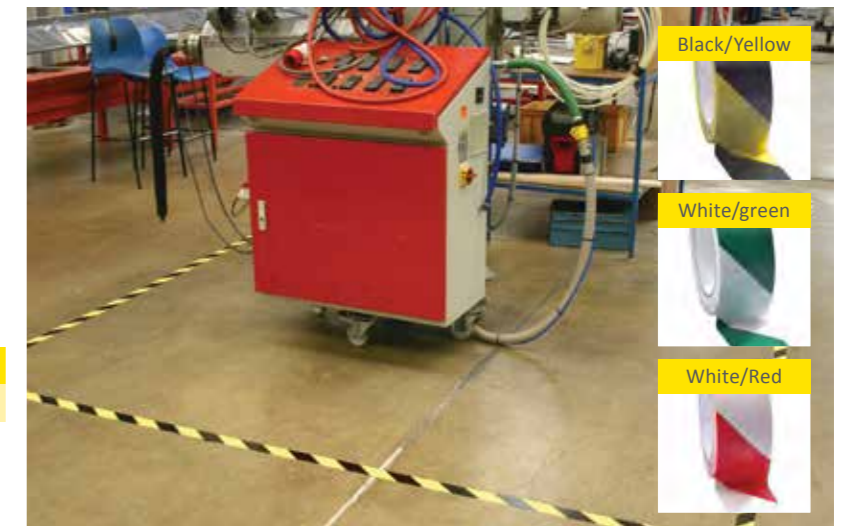
Tape

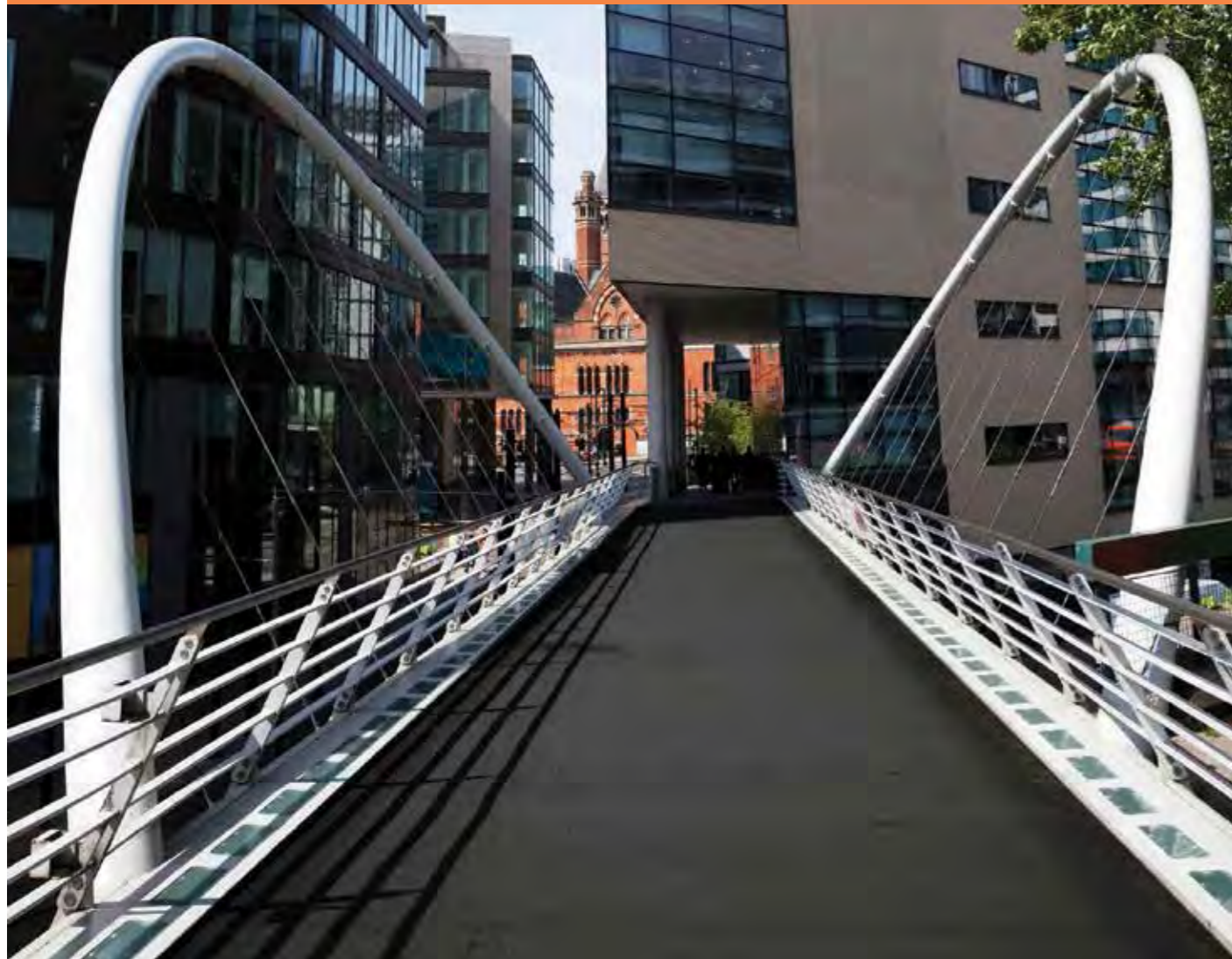
Floortape for clear definition

- Self-adhesive backed PVC floor tape.
- Designed to effectively mark lines on floors.
- Ideal for factory floors and industrial use.
- White version is popular for the leisure industry.
- Plain or hazard striped options.

Size

- 50mm x 33m





Flooring

Our diverse flooring options are used by a wide variety of sectors spanning commercial, industrial, local authorities and public areas, such as passenger transport terminals. From smart PVC and rubber floor tiles for indoor use, to robust reinforced GRP floor products for internal and external walkways.

Slip Tested

Maabele Group Europe's range of GRP products have been tested for slip resistance. Ramp Slip Tested to R13 in accordance with DIN 51130: 2010. Pendulum Slip Tested in accordance with pTBS 7976-2: 2002-V 79 indry conditions PTV 73 in wet conditions



MAABELEGRiP is a range of UV stabilised GRP sheets, treads and stair nosing designed to offer exceptional levels of slip-resistance both indoors and out, while having outstanding wear and tear qualities. It is an ideal underfoot safety solution for pedestrian Blackand factory walkways, access ramps, gangways and bridges.

The Silicone Carbide 'gritted' top surface provides effective underfoot grip and is resistant to most solvents and chemicals. It is manufactured using flame retardant materials. Easy to install, simply bond or screw to the existing floor surface, COBAGRiP is a cost-effective means of refurbishing damaged or slippery floors. Easy to clean (pressure wash)

GRiP Sheet

- Ideal solution to combat slip hazards such as spilt liquids or ice.
- Suitable for use with forklift traffic.
- Simply bond or screw to the existing floor surface.
- Colour: black.

Product height: 3mm GRP base overall 5mm



Size
1.2m x 1.2m



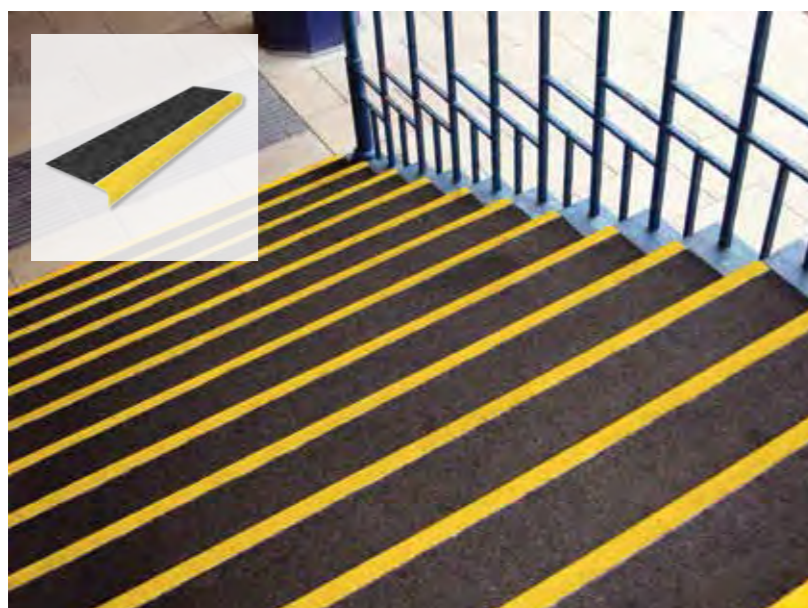
GRiP Stair Nosing

- Designed to help prevent slips on stairs.
- Suitable for use on existing or new-build steps.
- Manufactured with chamfered back edge for additional safety.
- Bright colour for visibility meeting DDA requirements.

Product height: 3mm GRP base overall 5mm

Size
55mm x 55mm

Lengths
1.0m
1.5m



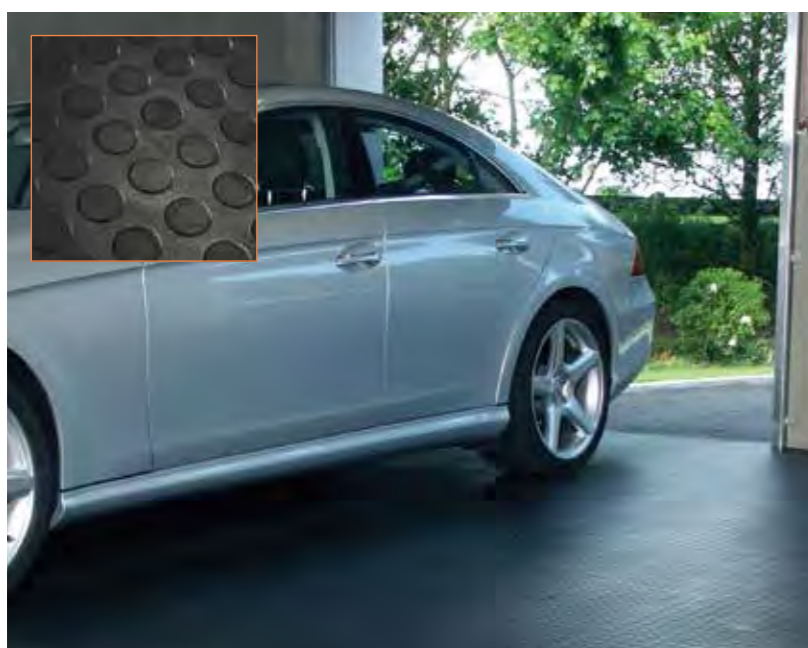
GRiP Stair Tread

- Silicone Carbide surface helps to prevent slip accidents on stairs.
- Designed to fully cover the stair area.
- 345mm x 55mm contrasting coloured nosing meeting DDA requirements.
- Can be used in conjunction with COBAGRIP Sheet.

Product height: 3mm GRP base overall 5mm

Size
345mm x 55mm

Length
1.5m



Stud

A smart solution for floor refurbishment

- Hard-wearing Flexible Vinyl floor tile with studded pattern.
- Raised studs provide some slip-resistance underfoot
- Manufactured from recycled material
- Conforms to the requirements of SABS 0177
- Anti-static properties E7 Test method BS2050
- Fire Rating, conforms to the requirements of ISO 554 resistant to alkalis and oil and is self-extinguishing in the event of fire.
- Colour: Black

Product Height: 6mm

Sizes
Tile 500mm x 500mm
Optional bevelled edge 500mm x 45mm

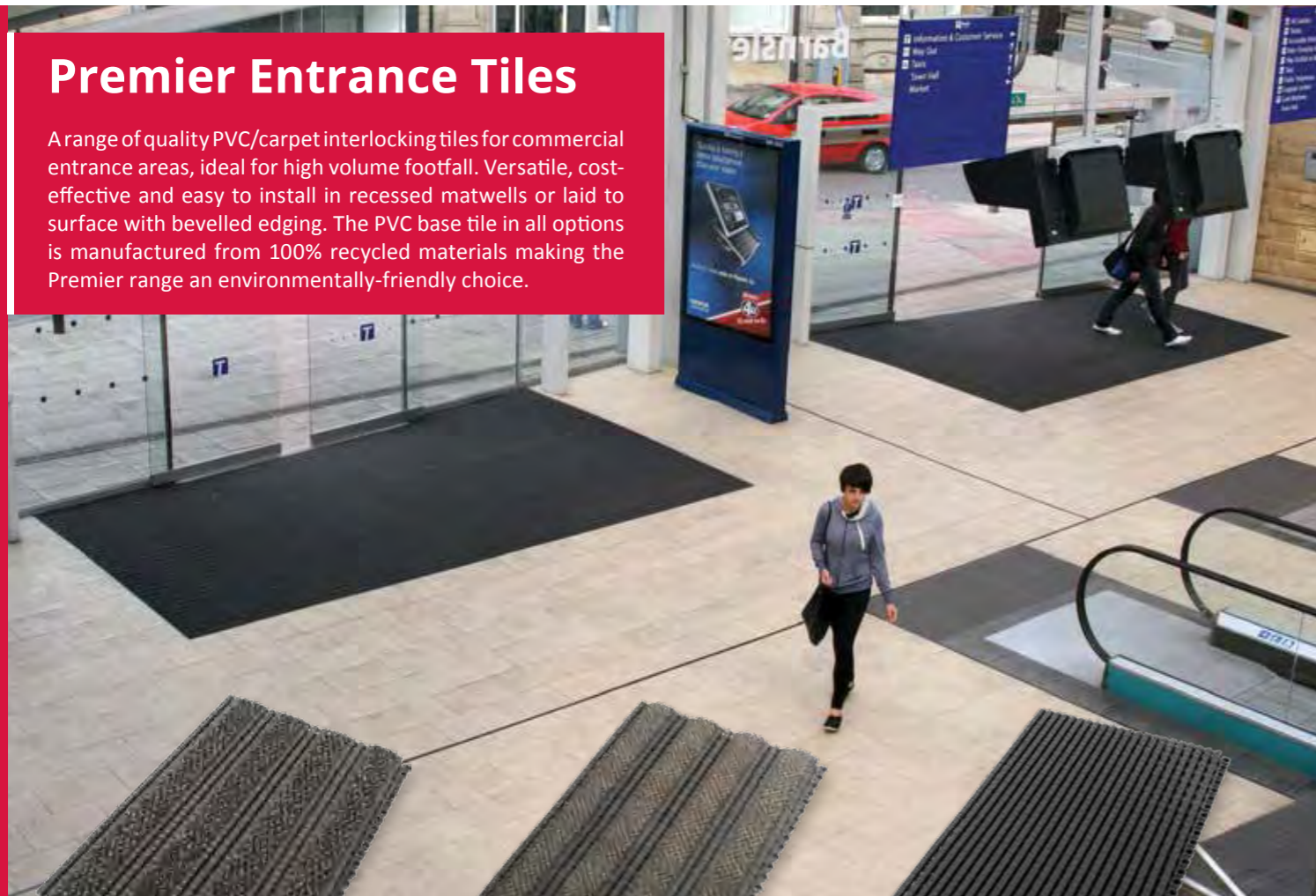


Entrance Matting Systems

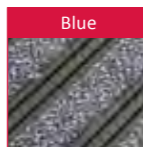
Maabele Group offers an extensive range of Carpet and PVC Tiled based entrance matting systems that are both stylish and deliver superior wear resistance for busy areas subjected to high volumes of pedestrian footfall. Many of our options have environmentally-friendly credentials, incorporating recycled materials in their manufacture. Whether it is interlinking entrance tiles or carpet on rolls, our fully trained sales team can advise at every stage of specification and installation.

Premier Entrance Tiles

A range of quality PVC/carpet interlocking tiles for commercial entrance areas, ideal for high volume footfall. Versatile, cost-effective and easy to install in recessed matwells or laid to surface with bevelled edging. The PVC base tile in all options is manufactured from 100% recycled materials making the Premier range an environmentally-friendly choice.

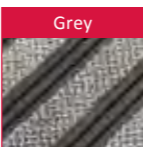
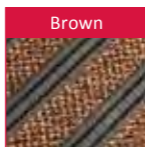


Tile Size
30cm x 45cm

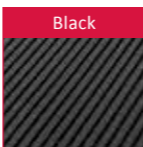


Tile Size
30cm x 45cm

Load tested to 1,000 kg. This means that these tiles can withstand supermarket supply trolleys.



Anthracite



Tile Size
30cm x 45cm

Premier Plus

- Ideal for recessed entrance wells.
- Quality needlepunch carpet insert.
- Effectively scrapes dirt and wipes moisture.
- Links together to cover all floor sizes – indoor use.
- Move, clean or replace individual tiles with ease.
- Flexible - easily cut to shape.
- Fire tested to EN13501 Euro Classification E(F1).
- Tile base is colourfast to light: BS EN ISO 105 B02:1999.

Product height: 18mm

Premier Track

- Heavy-duty, premium quality.
- Ideal for recessed entrance wells.
- Crush-resistant nylon carpet insert.
- Effectively scrapes dirt and wipes moisture.
- Suitable for wheeled trolleys.
- Safe for high heeled footwear.
- Move, clean or replace individual tiles with ease.
- Fire tested to EN13501 Euro Classification B(F2)S2.
- Slip tested to BS 7976-2:2002 Pendulum Test.

Product height: 16mm

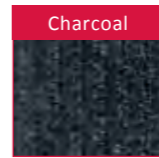
Premier Grip

- 100% recycled PVC.
- Suitable for use indoors and outdoors.
- Dirt-scraping raised nodules.
- Small holes provide efficient drainage.
- Suitable for wheeled access.
- Easy to install, clean and maintain.
- Fire tested to EN13501 Euro Classification B(F1)S1.
- Links directly with Premier Plus & Premier Track tiles.

Product height: 12mm

Toughrib Contract

Ribbed entrance matting on a roll



- A popular choice for flooring contractors requiring versatile rolls of entrance carpet.
- Ribbed surface not only looks smart, but is designed to scrape dirt and wipe moisture.
- Debris and moisture is captured in the ridges and easily vacuumed.
- 100% polypropylene pile is durable and suitable for heavy-duty use.
- Primary (latex) and secondary (gel foam) backing.
- Can be used in recessed matwells or on pedestrian walkways.

Pile height: 4.5mm ± 10%
Overall height: 7.5mm ± 10%
Product weight: 1350g/m² ± 10%

Sizes
2m x 30m roll
2m x per linear metre



Entrance Mats

From heavy-duty entrance mats to domestic doormats, Maabele Group has it covered! This section is packed with contemporary and traditional designs to suit most budgets, with options in a wide variety of sizes, colours and wear grades for indoor and outdoor dirt/moisture control.

Material Guide

Material	Nylon	Rubber	Polypropylene
Info	Nylon is a synthetic fibre and offers some of the best resiliency of all carpet materials through good crush resistant properties. The other benefit of nylon entrance matting is its ability to dry quickly.	Rubber is suitable for heavy-duty outdoor entrance areas. Rubber door mats have good non-slip characteristics. They are generally quite heavy and therefore stay in place well on the ground.	Derived from a thermoplastic polymer, entrance matting with polypropylene fibres is very popular as the fibres give an effective scraping action due to their abrasive texture.

Reducing Slip Hazards

Slips and trips are the most common cause of major injuries at work. Most slips occur on wet or contaminated floor surfaces. Even dry dirt and grit can present a slip hazard. In the UK, a staggering 95% of major slips reported result in broken bones and can even lead to more serious accidents, even fatality according to HSE statistics.

It is impossible to put a cost on individual suffering the estimated cost to industry is over £500 million per year, while cost to society is considered to be over £800 million per year. Effective entrance matting when used in conjunction with smooth floors, plays a critical role in slip prevention to employees, the general public and in the home.

Cost of Cleaning

A well planned entrance area not only looks good but is practical too. Many external entrances use outdoor scraper mats followed by one, or even two internal mats, sometimes referred to as 'entrance zones' in larger buildings. Choosing and installing the right entrance matting can effectively remove up to 90% dirt and debris from

footwear, helping to significantly reduce cleaning costs and protect interior floor coverings. Cleaning products and services are an expensive commodity and a good quality entrance mat can really help to reduce associated costs.

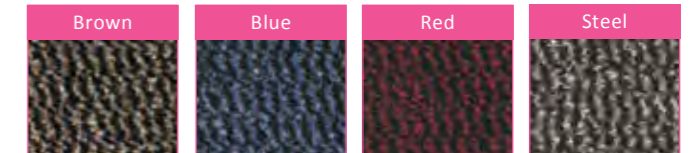
Vyna-Plush

The perfect low cost doormat

- Budget doormat offering all-round performance.
- Scrapes dirt and wipes moisture.
- 100% Polypropylene fibre 'scraping' surface.
- Slip and stain-resistant PVC 'stay in place' backing.

Pile material: 100% polypropylene
 Backing: Slip and stain-resistant PVC
 Product height: 7mm
 Total weight: 2.6kg/m²

Sizes
0.6m x 0.9m
0.9m x 1.5m
0.9m x per linear metre (maximum length 25m)
1.2m x 1.8m
1.2m x per linear metre (maximum length 25m)



Wash®

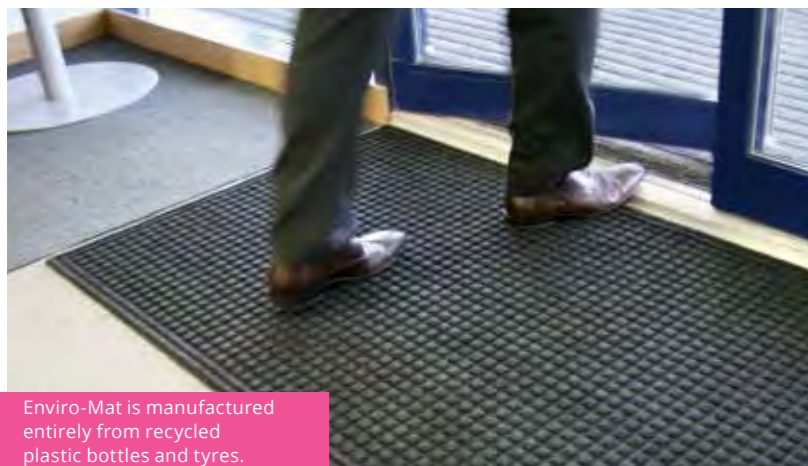
Practical, machine washable

- A real asset in floor protection for domestic and commercial use.
- Easy care, smaller sizes* can be washed in a domestic washing machine. (All sizes can be washed in an industrial washing machine.)
- Tufted nylon/polyester carpet pile retains up to 3.5 litres/ m² of moisture.
- Also traps up to 800g of debris/dry dust.
- Features a robust nitrile 'gripper' backing.
- Bleach / fade resistant – 11 year warranty against significant colour loss.

Pile material: Nylon/polyester
 Backing: Features a robust nitrile 'gripper' backing.
 Product height: 9mm
 Total weight: 2.3kg/m²

Sizes
*0.6m x 0.85m
0.85m x 1.5m
1.15m x 1.75m
0.9m x 3m (Black / Steel only)





Enviro-Mat is manufactured entirely from recycled plastic bottles and tyres.



Enviro-Mat

Made from 100% recycled materials

- Sturdy doormat manufactured from 100% recycled materials.
- Heavy-duty recycled rubber backing helps to grip to the floor surface.
- Raised pattern polyester carpet surface made from recycled plastic bottles scrapes and traps dirt/debris.
- Total carpet coverage eliminates torn borders.
- UV and fade resistant surface.

Pile material: 100% recycled plastic (bottles)
Backing: 100% recycled rubber (tyres)
Product height: 10mm
Total weight: 3.7kg/m²

Sizes
0.6m x 0.9m
0.9m x 1.5m

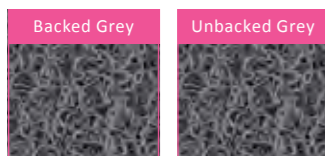


Loopermat

Distinctive looped design matting

- Soft, compounded PVC looped surface traps dirt, debris and moisture.
- Cleaning is easy – simply shake to release the debris.
- Heavy Unbacked for recessed matwells featuring a mesh underlay to prevent shrinkage.
- Medium Backed for loose lay applications with PVC backing.
- Fire tested to DIN 4102 (B1).
- UV stabilised for fade resistance.

Product height:
9mm (Medium Backed)
14mm (Heavy Unbacked)



Sizes
0.9m x per linear metre
1.2m x per linear metre
(maximum length 9m)



Tough-Turf

Extreme weather needs extremely tough matting

- Robust fibres have a brushing effect to scrape dirt, debris, snow and moisture.
- Exceptionally resilient in harsh weather conditions - ideal for both hot and cold climates.
- Super-tough, yet stylish outdoor scraper entrance mat for all-year round use
- Surface has the abrasive texture of synthetic turf material
- Filament structure creates a capillary effect for improved dirt retention/absorbency
- Fibres spring back after pressure to retain their shape
- Easy to clean – simply hose, shake or brush to free debris
- Manufactured from cost-effective recycled polyethylene.

Material: PVC
Product height: 16mm
Total weight: 3.2Kg/m²



Size
0.9m x 16m

Ringmat

Extremely tough rubber matting

- The ideal choice for demanding conditions such as icy, snow prone locations.
 - Provides excellent slip resistance – conforms to Slip Resistance Test EN 13552 Category R10.
 - Large holes allow debris to fall through the mat.
 - The raised pattern scrapes dirt and debris from footwear.
 - Octomat design gives the option of brush inserts for enhanced scraping.
 - Optional B1 fire tested mats are available.
1. Connectors available to link matting for larger area coverage.

Material: Rubber
Product height: 23mm
Total weight: 12kg/m²

Sizes
0.4m x 0.6m
0.6m x 0.8m
0.8m x 1.2m
1m x 1.5m



Rampmat

Honeycomb rubber for all seasons

- Manufactured from durable NBR rubber making this popular doormat suitable for most climates.
- Superior slip resistance conforming to Slip Resistance Test EN 13552 Category R10.
- Raised circular pattern surface provides grip while scraping dirt and moisture.
- Moulded bevelled edging for safety and wheeled access.

Material: SBR Rubber
Product height: 10mm
Total weight: 7.3kg/m²

Size
0.9m x 1.5m



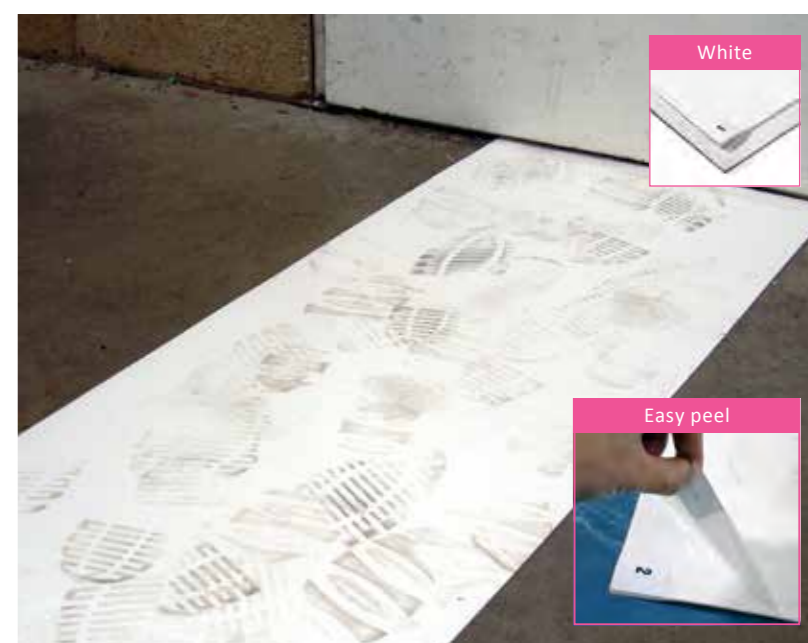
First-Step

Tacky mats for contamination control

- A hygienic pad of peel-off adhesive coated, disposable sheets manufactured from an anti-microbial agent to protect against bacteria, mould and mildew.
- Once applied to the floor the self-adhesive backing keeps the mat in place.
- The 'tacky' sheets capture dirt and dust from footwear and wheeled equipment for contamination control.
- When the top sheet becomes soiled, simply peel off to reveal a clean layer.
- Adhesive backed pads stick directly to the floor surface.
- Ideal for hospitals, clean rooms, general industrial and food contact applications.

Product height: 1.5mm

Size
0.46m x 1.17m (pack of four pads with 30 layers)





Mats for Catering

Those working in food/beverage manufacture and the hospitality sector are especially vulnerable to the risk of slipping on wet or contaminated floor surfaces. Our purpose designed anti-slip mats significantly help safety underfoot. There are hygienic, anti-microbial options specifically for food preparation areas. Also in this section, is a range of anti-fatigue mats ideal for those who stand for prolonged periods of time; what's more they can also help prevent glass and china breakage.

Maabele Group

Deluxe

The ultimate rubber bar matting

- Outstanding comfort for bar tenders.
- Effective in reducing glass breakage.
- Open holes provide efficient drainage.
- Provides excellent slip-resistance.
- The choice of many bar flairs and nightclubs.
- Installed and cleaned with ease.
- Connectors available to link mats for larger floor coverage.

Product height: 19mm

Sizes
Mat 1m x 1.5m
Long edge 1565mm x 50mm
Short edge 1074mm x 50mm



Fatigue-Step

Versatile interlocking rubber floor tiles

- Interlocking rubber tiles.
- Ideal for bars and kitchens.
- Open holes allow drainage of spilt liquids.
- Reduces the risk of slipping on wet/greasy surfaces.
- Effective anti-fatigue properties.
- Easy to install, move, clean and replace.

Product height: 19mm or 14mm

Sizes
Tile 0.9m x 0.9m
Bevelled corner edge 75mm x 1m (19mm)



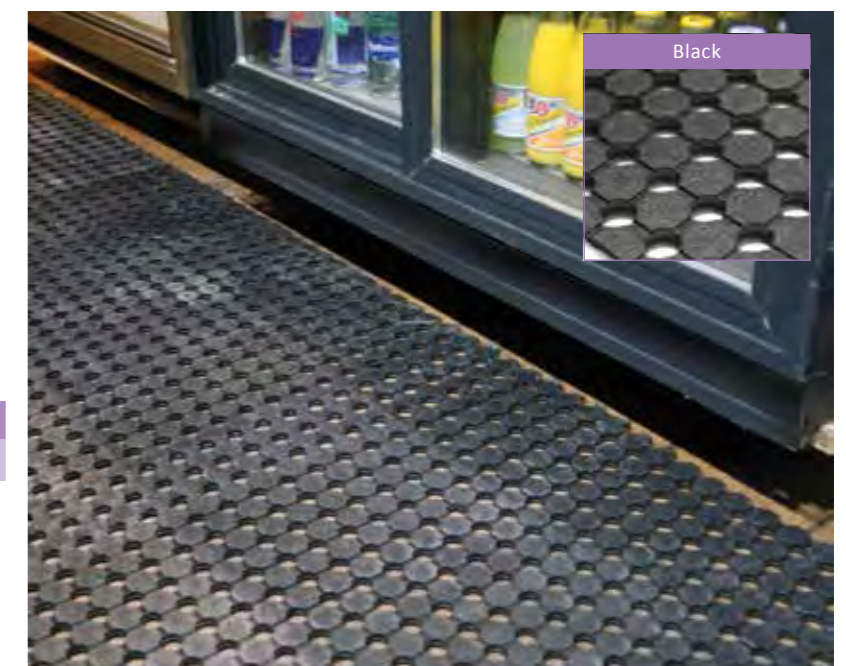
Unimat

The only 'drainable' rubber runner

- Hardwearing rubber runner with drainage holes.
- Provides effective slip-resistance in wet conditions.
- Simply roll up and move.
- Ideal for event caterers.
- Easily cleaned.

Product height: 10mm

Size
0.9m x 10m





Rampmat

Economical anti-fatigue mat

- A handy and economical anti-fatigue mat for the workplace.
- Raised circular surface for superior slip resistance.
- Conforms to Slip Resistance Test EN13552 Category R10.
- Open drainage holes for spilt liquids.
- Made from hardwearing NBR rubber.
- Moulded bevelled edges reduce trip hazards.

Product height: 10mm

Size
0.9m x 1.5m



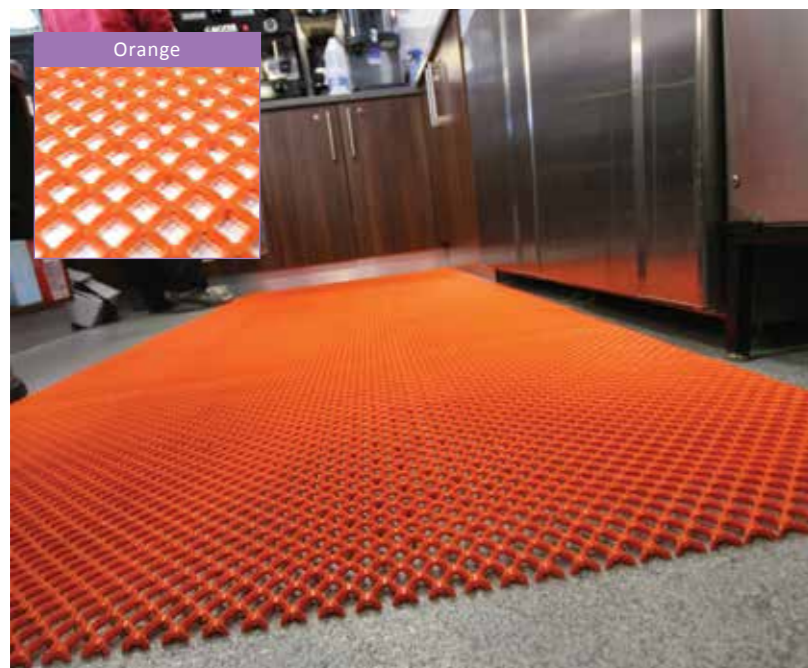
K-Mat

Best-selling 'safety floor' kitchen mat

- Hygienic anti-microbial properties.
- 100% nitrile - excellent resistance to grease, oils, fats and detergents.
- Raised cross-grip surface for effective slip-resistance.
- Open holes allow spilt liquids to drain efficiently.
- Cushioned surface for comfort / reduced breakage.
- Easily cleaned in a commercial washing machine.
- Bevelled edges all round.

Product height: 9mm

Sizes
0.85m x 1.4m
0.85m x 2.9m



Diamond Grid

Flexible matting for catering, hospitality and food processing industries

- Anti-slip top surface for a safe footing in wet conditions.
- Specially designed underside studs have exceptional water drainage properties.
- Easily cleaned, rolled up and moved.
- Open diamond grid pattern for nonslip surface.

Product height: 8.5mm
Product weight: 2.8kg/m²

Size
1m x 2.4m

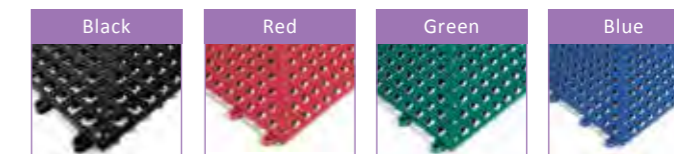
Flexi-Deck

Hygienic storage surface for glasses

- Flexible PVC tile for bar shelves.
- Hygienic PVC does not support the growth of bacteria.
- Holes provide efficient drainage and allow air to circulate.
- Simply interlink to cover desired area.
- Easily cleaned in a commercial dishwasher.

Product height: 13mm

Sizes
300mm x 300mm (pack of 9)
Female / Male Edge (pack of 3)
Corner (pack of 4)



Gripsafe

Gives surfaces enhanced grip

- Ideal non-slip liner for bars, shelves and trays.
- Easy to cut to shape.
- Machine washable.
- Manufactured from foam PVC.

Product height: 4mm

Sizes
0.6m x 1.2m
0.6m x 10m



Fingertip Bar Mat

No more sticky bar surfaces!

- Flexible rubber bar mat for cleaner bar surfaces.
- Excellent drainage – spillage is contained within the mat.
- Raised fingertip surface helps to stop glassware slipping.

Product height: 13mm

Size
600mm x 80mm





Mats for Leisure

'Leisure' is a broad category and we have a diverse selection of matting and floor safety products to match, all of which are widely used by this sector. We offer hygienic anti-slip matting for use around swimming pools and in changing rooms, rubber safety matting for children's play areas, weight-room mats and tiles for gymnasias. And we even stable mats for horses.



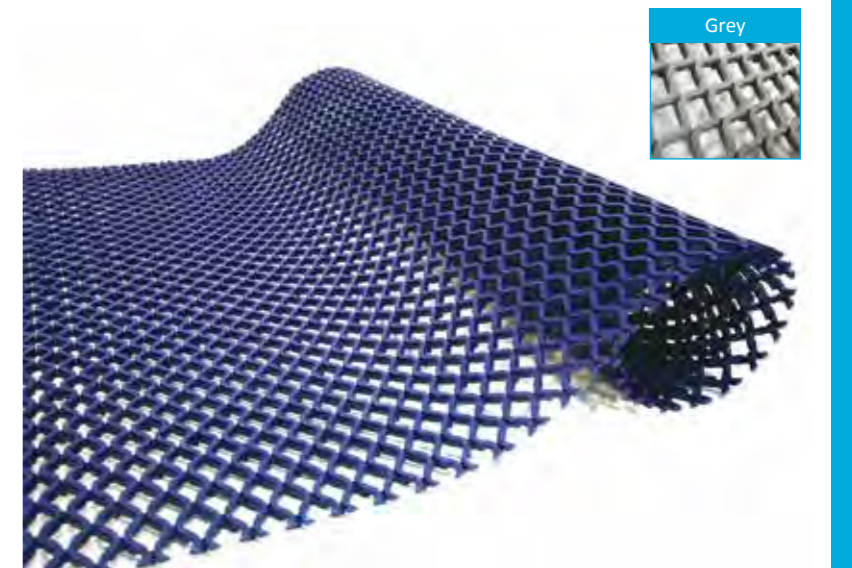
Diamond Grid Leisure

Flexible PVC matting for wet leisure areas

- Open diamond grid pattern for non-slip surface.
- Anti-slip top surface for a safe footing in wet conditions.
- Comfortable and hygienic bare feet.
- Specially designed underside studs have exceptional water drainage properties.
- Easily cleaned, rolled up and moved.

Product height: 8.5mm
Product weight: 2.8Kg/m²

Size
1m x 9m



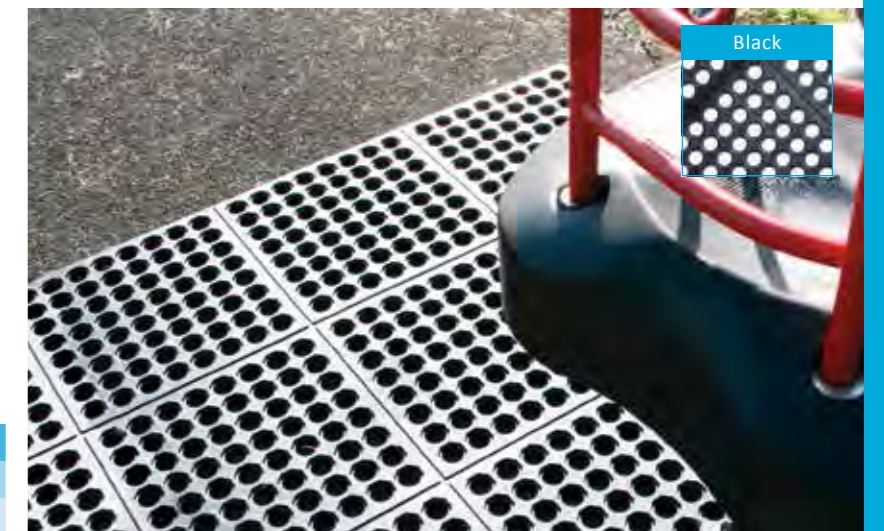
Fatigue-Step

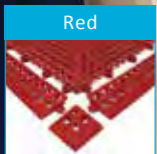
Interlocking rubber safety tiles

- Interlocking rubber tile system.
- Ideal for increasing safety at outdoor play areas.
- Tested to Critical Fall Height of 0.6m (BS EN 1177:1998).
- Comfortable, yet resilient rubber.
- Excellent drainage in wet conditions.
- Conforms to Slip Resistance Test EN13552 Category R10.

Product height: 19mm or 14mm

Sizes
Tile 0.9m x 0.9m
Bevelled corner edge 75mm x 1m (19mm)





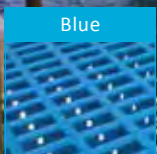
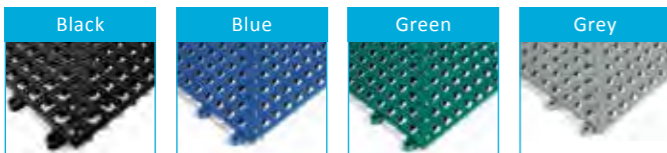
Flexi-Deck

Ideal for shower rooms and swimming pool walkways

- Flexible, hygienic PVC floor tile.
- Reduces slipping on wet surfaces.
- Textured top surface.
- Comfortable to walk on barefoot.
- Holes provide efficient drainage of water.
- Underside studs enhance drainage.
- Easy to roll up, clean and relocate.

Product height: 13mm

Sizes
Tile 30cm x 30cm (pack of 9)
Female edge (pack of 3)
Male edge (pack of 3)
Corner (pack of 4)



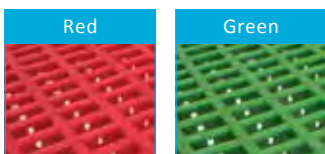
Leisure Mat

The original PVC safety matting for leisure

- Premium quality PVC leisure matting.
- PVC does not support the growth of bacteria.
- Designed to reduce the risk of slipping.
- Popular for pools and changing areas.
- Interwoven design for drainage.
- Safety bevelled edging as standard.
- Conforms to Slip Resistance Test DIN51097 Category B.

Product height: 12mm

Size
0.6m x 1.2m



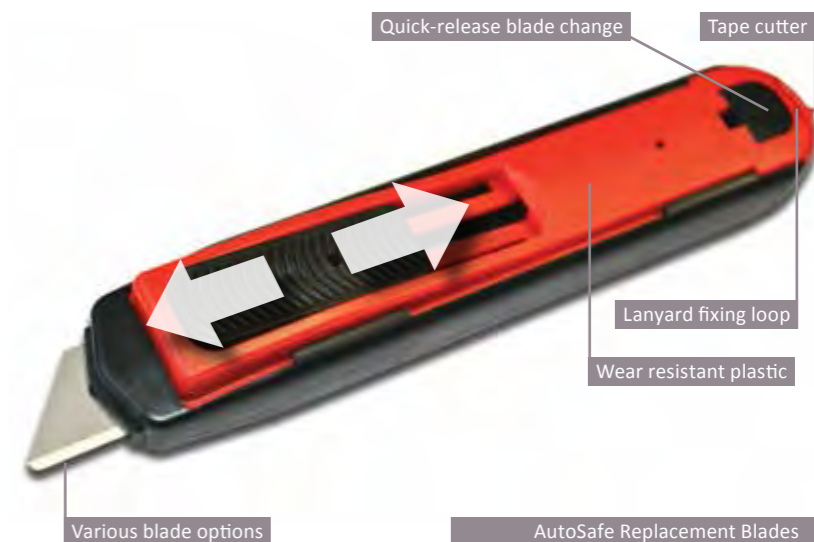
AutoSafe

Ultra lightweight safety utility knife with an innovative pressure sensitive auto retracting blade.

- Automatic blade retraction on completion of cut, even when slider is held forward.
- No possibility of leaving the blade out unattended.
- Easy blade change system – no tools required.
- Suitable for left handed and right handed users.
- Comfortable ergonomic grip.
- Ultra lightweight design - 50 grams.
- Durable wear resistant plastic.

Suitable for:

- Warehouse / Distribution.
- Picking / Repack operations.
- Shrink wrap.
- Boxes.
- Tape cutting.
- Bubble wrap.



Various blade options

AutoSafe Replacement Blades



Standard Blade

Anti-Stab Blade

Dispo Lite

High performance lightweight disposable safety knife with built in tape cutter and ergonomic handle.

Suitable for cutting the following:-

- Shrink wrap.
- Pallet strapping.
- Box opening (tape cutting).
- Bag opening.
- Supplied in packs of 25.



Tape cutting Thumb-nail

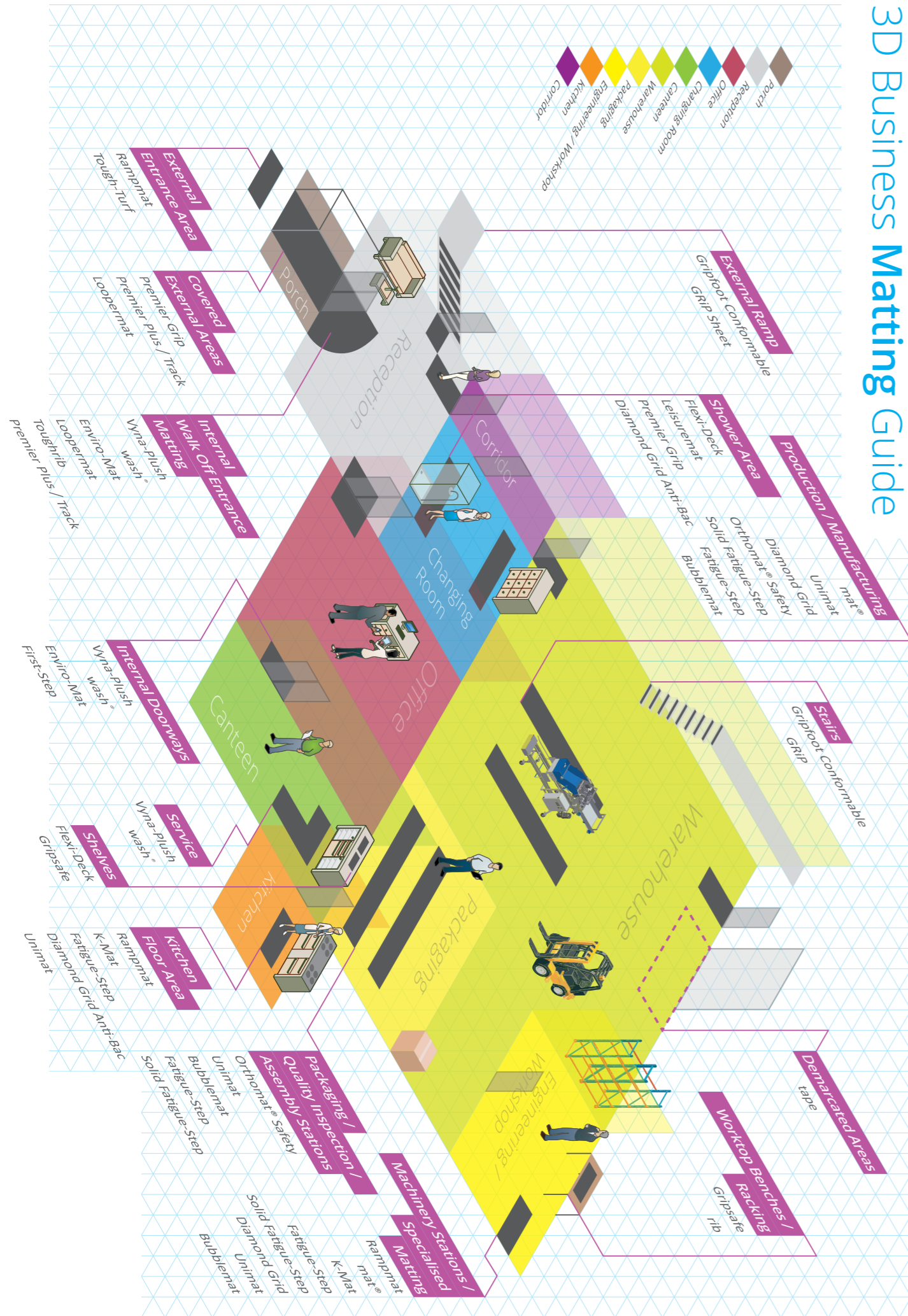
Ergonomic grip

Loop for fixing to lanyard

5mm finger safe gap, no chance of blade exposure

Ultra strong slimline nose is ideal for the safe opening of ingredient bags

3D Business Matting Guide



Index

		Page N°
A	Anti-Fatigue Mats	8
	Anti-Slip Mats	8
C	Grip®	17
	Mat®	12
	Wash®	23
	Mats for Catering	26
D	Doormats	22
E	Electrical Switchboard Matting	13
	Entrance Matting	19
	Entrance Mats	22
F	Flooring	16
	Floor Tape	14
	Foam Mats	8
	Food Processing Mats	27
G	Garage Flooring	20
	GRP	16
I	Industrial Mats	5
K	Kitchen Mats	26
	Knives	33
L	Mats for Leisure	30
O	Orthomat® Safety	8
R	Rubber Mats	9
S	Safety Knives	33
	Swimming Pool Mats	31
T	Tape	15
W	Washable Doormats	23
	Workplace Matting	5

History

We've come a long way



Sandton Offices

 +27 11 025 0301

 +27 86 626 0790

 sales@maabele.co.za

 www.maabele.co.za

